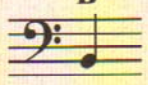



4 Discovering LH Harmonic 6ths and New Note: B

The harmonic 6th increases the reach of the hand from a 5th to a 6th.

NEW NOTE	B		B: 2nd line note on the bass clef staff.

Building Technique: Alternating Between Harmonic 5ths & 6ths:

Play a 5th with your LH, then reach a little to play a 6th. Use G as your anchor note or common note to keep the hand in place.




Dance of the Ukraine

Lively

Ukrainian Folk Song
Arr. by Janet Vogt

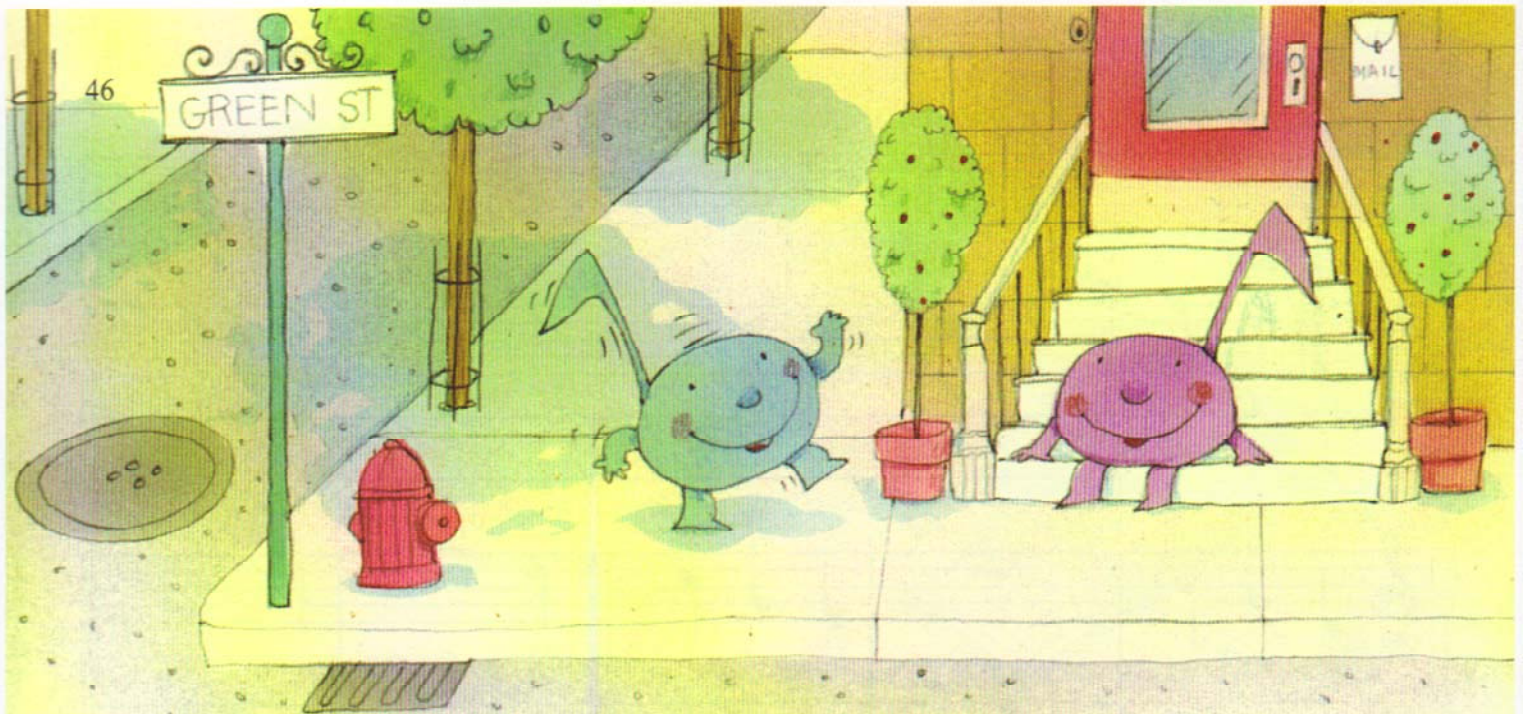


DISCOVERY CORNER

Dance the dance in G! Try transposing *Dance of the Ukraine* to G Major. Determine your starting positions, then maintain the same melody and intervals throughout. Remember to sharp all F's.



GREEN ST



Green Street Rag

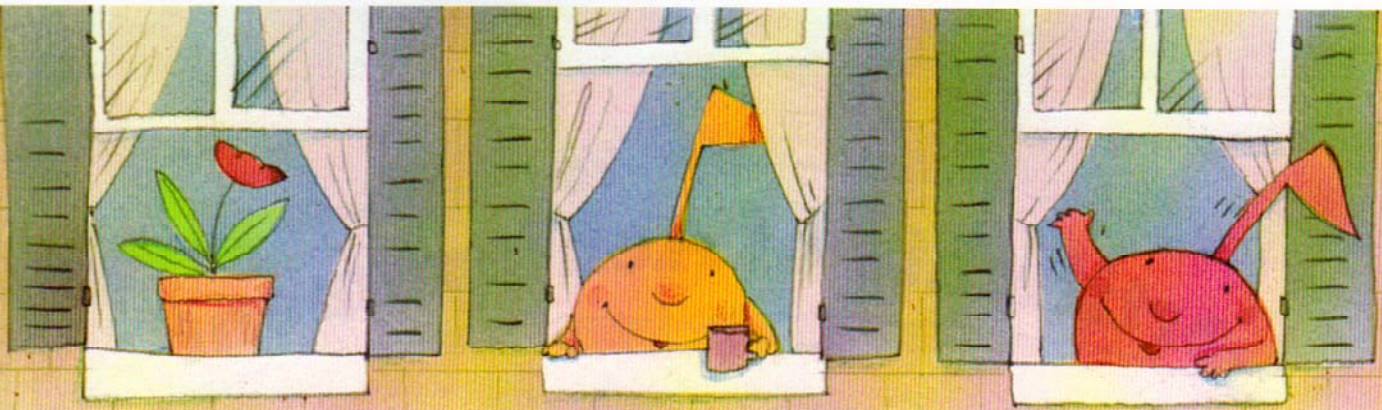
Ragtime moderato

Leon Bates

Musical notation for the first system of 'Green Street Rag'. It consists of two staves in 4/4 time. The upper staff is in treble clef and begins with a treble clef, a key signature of one sharp (F#), and a dynamic marking of *mf*. The lower staff is in bass clef. The first measure of the upper staff has a triplet of eighth notes (F#, G, A) with a '3' above it. The first measure of the lower staff has a pair of eighth notes (C, F) with '1' and '5' below them.

Musical notation for the second system, starting with a measure rest labeled '(3)'. The upper staff continues with eighth and sixteenth notes, including a triplet of eighth notes (B, C, D) with a '3' above it. The lower staff continues with eighth notes and rests, including a triplet of eighth notes (F, C, G) with a '3' below it.

Musical notation for the third system, starting with a measure rest labeled '(6)'. The upper staff continues with eighth and sixteenth notes, including a triplet of eighth notes (E, F, G) with a '3' above it. The lower staff continues with eighth notes and rests, including a triplet of eighth notes (C, F, C) with a '3' below it. The system ends with a dynamic marking of *mp*.



(9)

Musical notation for measures 9, 10, and 11. The treble clef staff contains a melody of eighth notes with fingerings 3, 1, and 2. The bass clef staff contains a simple accompaniment of chords and single notes.

(12)

Musical notation for measures 12, 13, and 14. The treble clef staff has a melody with fingerings 3 and 2. The bass clef staff has a simple accompaniment. A dynamic marking of *mf* is present in measure 12.

(15)

Musical notation for measures 15, 16, and 17. The treble clef staff has a melody with fingerings 4, 3, 2, 1, 1, and 3. The bass clef staff has a simple accompaniment with fingerings 5, 1, 3, 1, 3, and 5.

(18)

Musical notation for measures 18, 19, and 20. The treble clef staff has a melody with a fingered 1. The bass clef staff has a simple accompaniment with a fingered 1.



Discovering Triads

A *triad* is a 3-note chord containing a root, a 3rd and a 5th. Triads on the staff are always either line-line-line (notes) or space-space-space (notes). When the root is the bottom note of the triad, the triad is in *root position*. The triad gets its name from the root.

C Major Triad

5th	line
3rd	line
Root	line (C is the root)

5th	space
3rd	space
Root	space (C is the root)

G Major Triad

5th	line
3rd	line
Root	line (G is the root)

5th	space
3rd	space
Root	space (G is the root)

F Major Triad

5th	space
3rd	space
Root	space (F is the root)

5th	line
3rd	line
Root	line (F is the root)

Learn to recognize the "look" and placement of C, G and F triads on the staff.

Circle each C Major Triad.

Circle each G Major Triad.

Circle each F Major Triad.

Circle each C Major Triad.

Circle each G Major Triad.

Circle each F Major Triad.

Name each triad.
